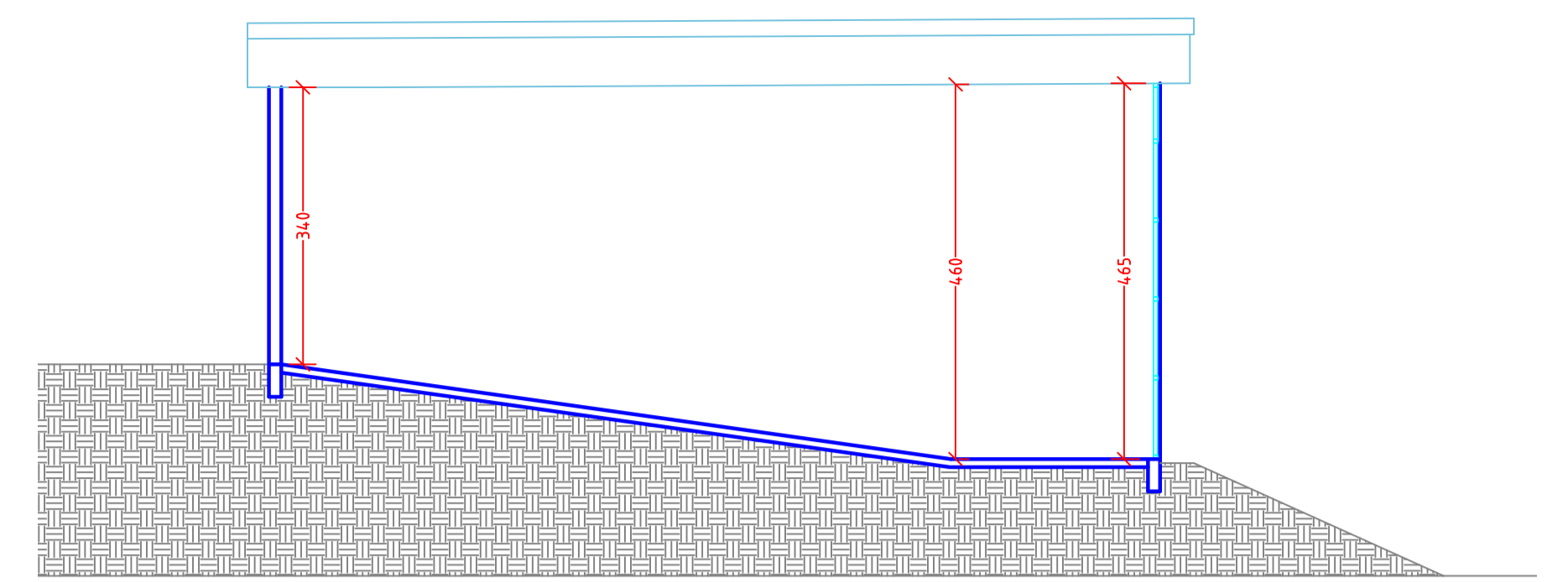
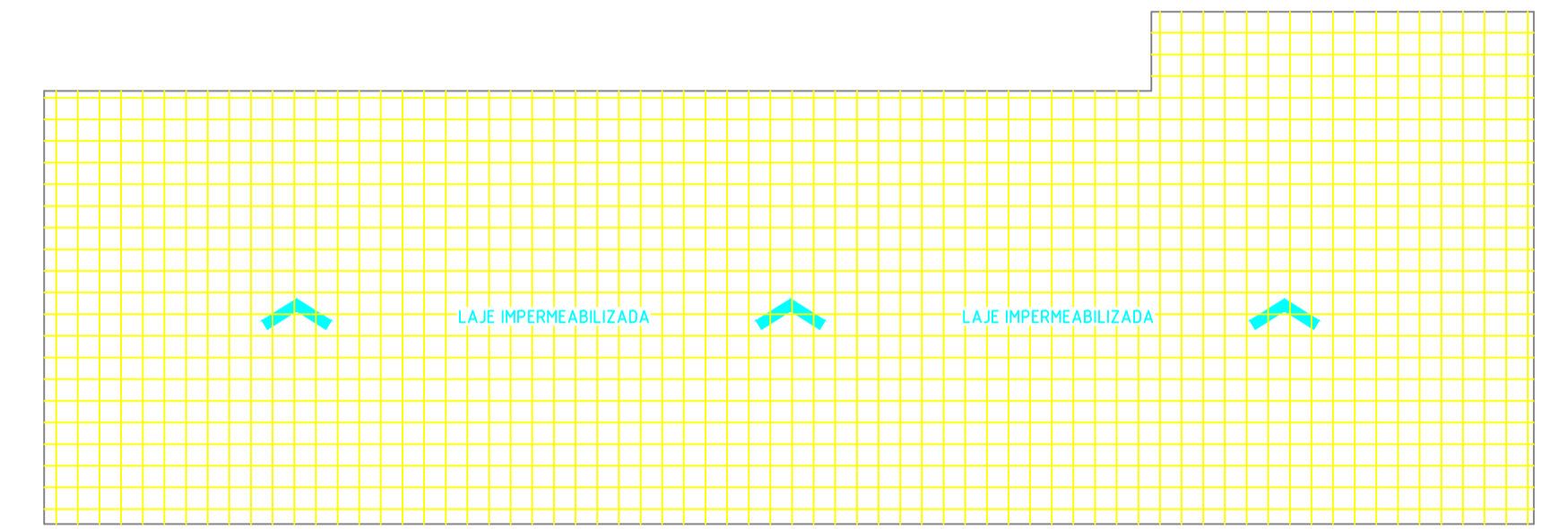


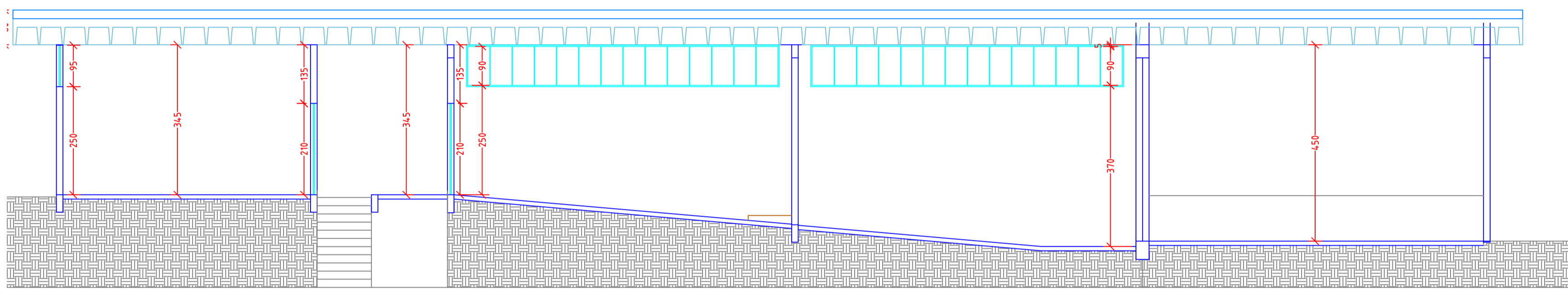
PLANTA BAIXA SUPERIOR
A= 303,33m²
Escala: 1: 50



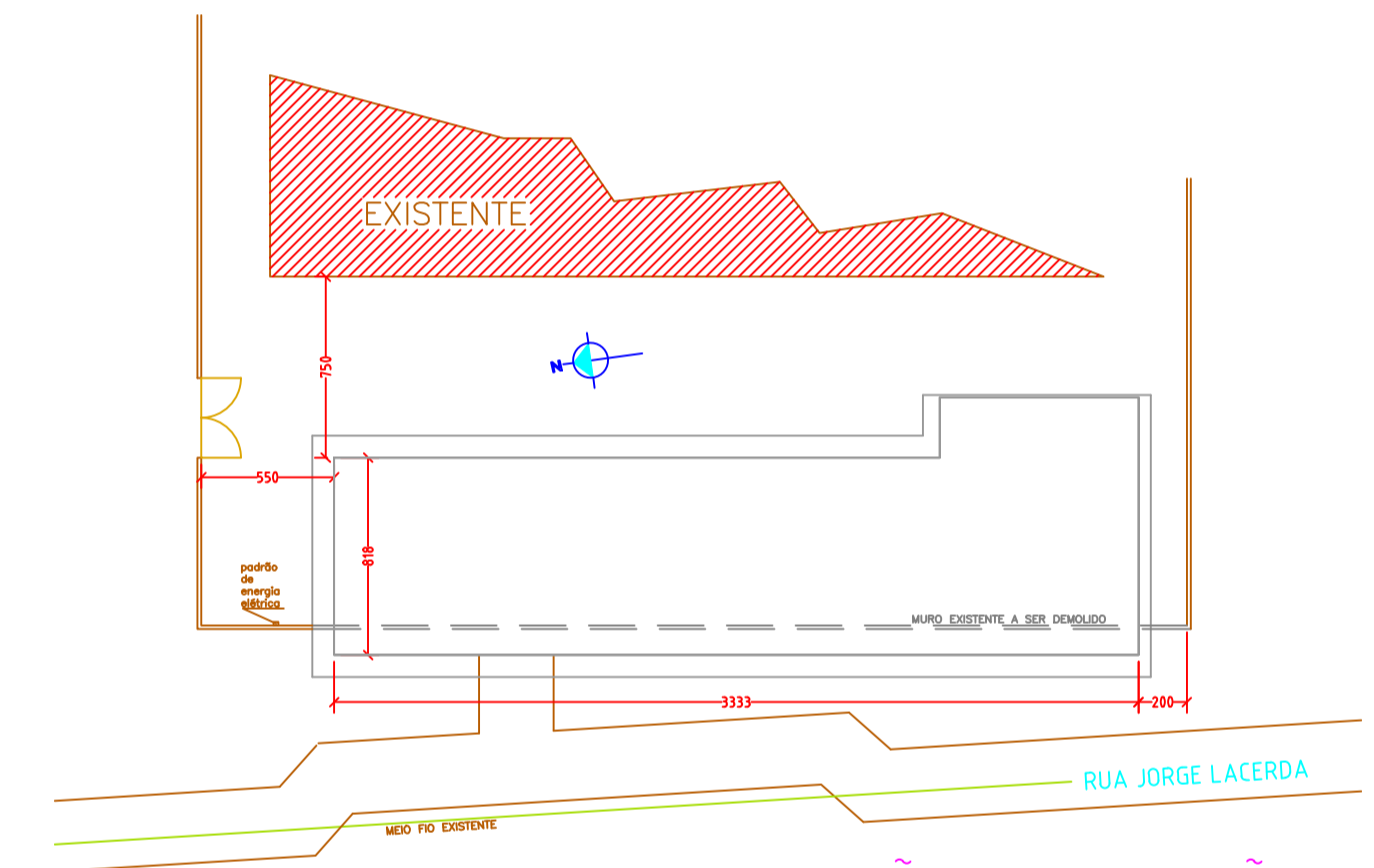
CORTE CC
Escala: 1: 50



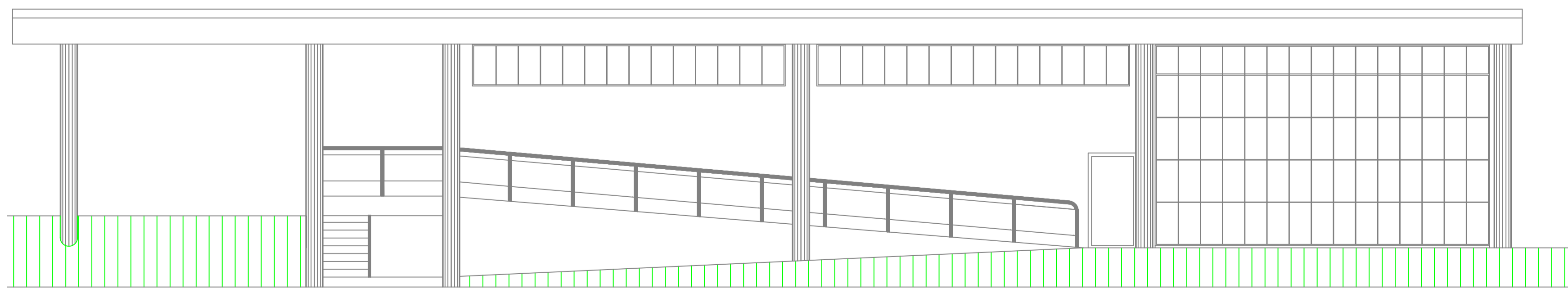
PLANTA DE COBERTURA
Escala: 1: 125



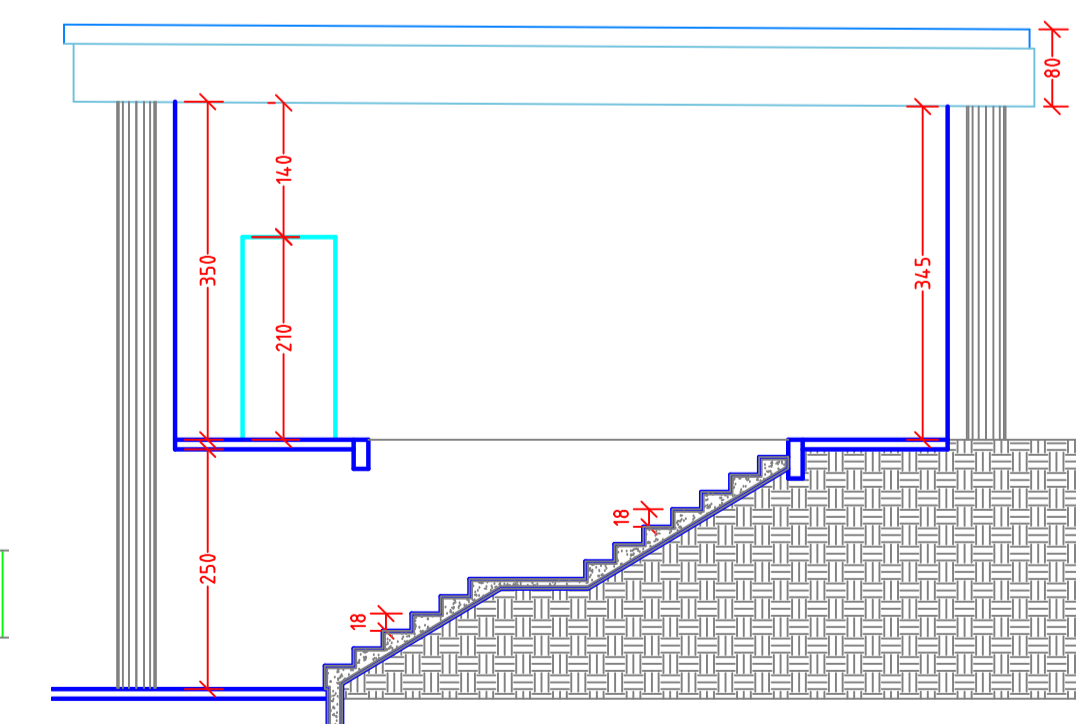
CORTE AA
Escala: 1: 50



SITUAÇÃO E LOCALIZAÇÃO
Escala: 1: 300



FACHADA FRONTAL
Escala: 1: 50



CORTE BB
Escala: 1: 50

ÁREAS:

Área de Ampliação	303,33m²
Obs:	

PREFEITURA DE MONTE CASTELO

AMPLIAÇÃO DA ESCOLA MUNICIPAL EDSON NAGANO

PREFEITURA DE MONTE CASTELO

Projeto Arquitetônico

01

ESCALA	INDICADAS	DATA	Set/2017
--------	-----------	------	----------