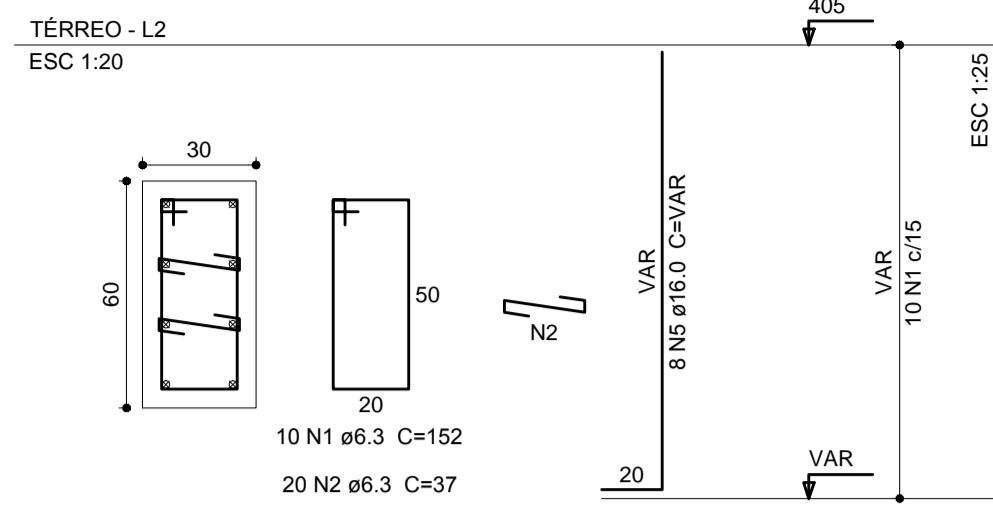
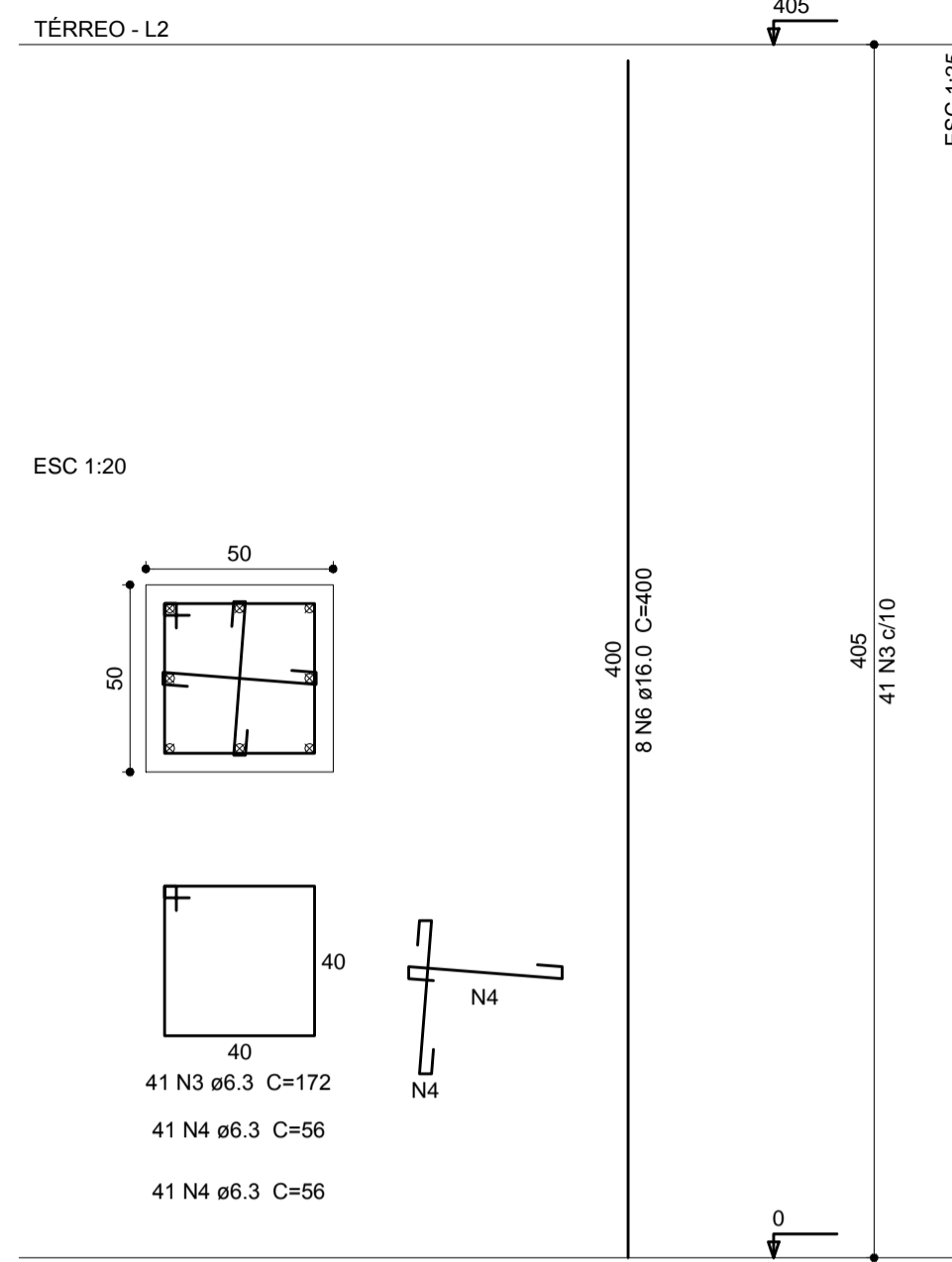


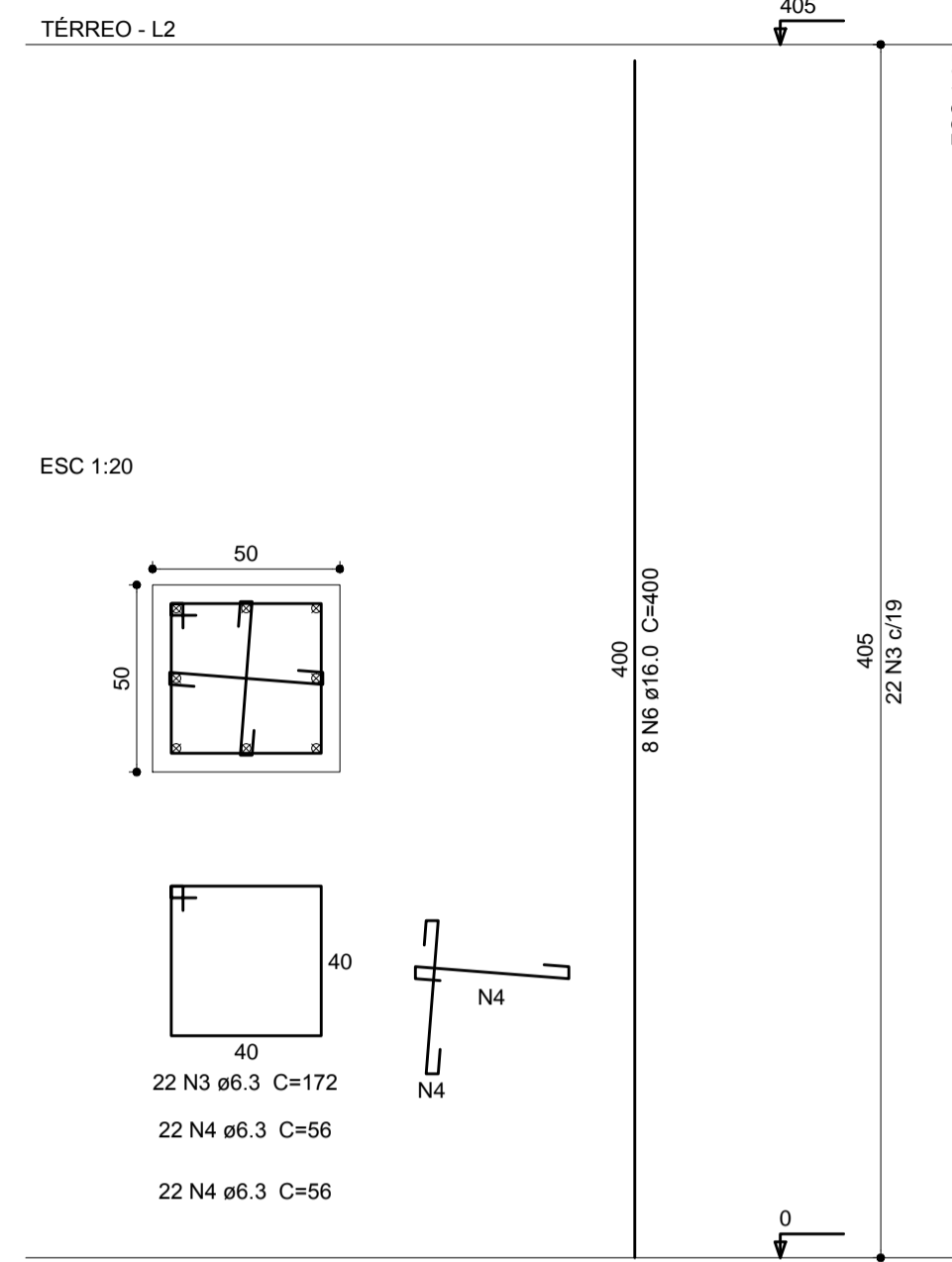
P1=P5



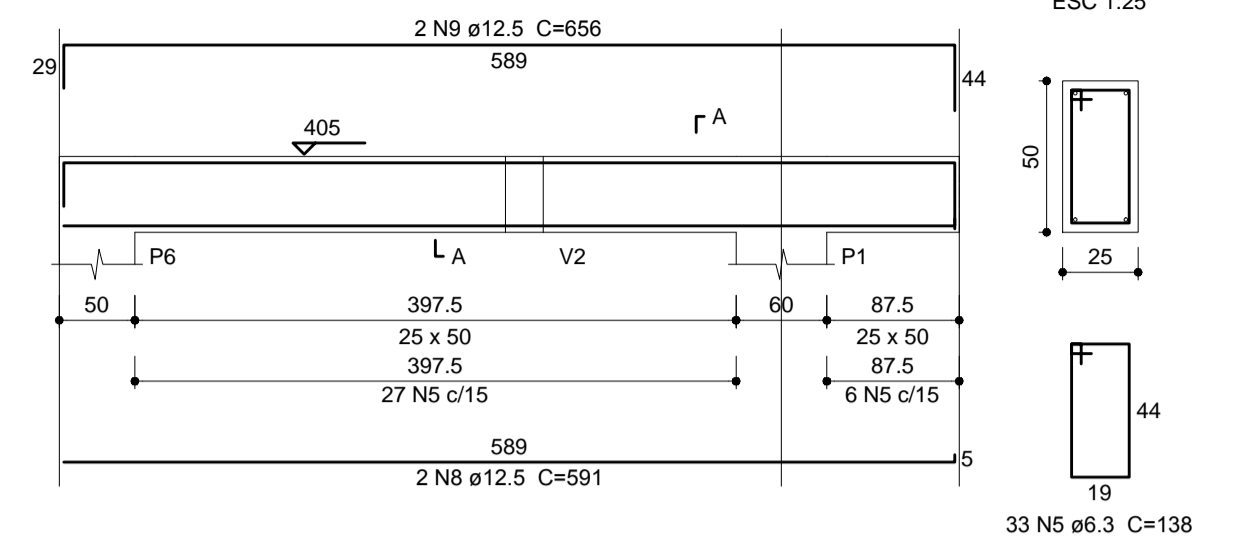
P2=P4



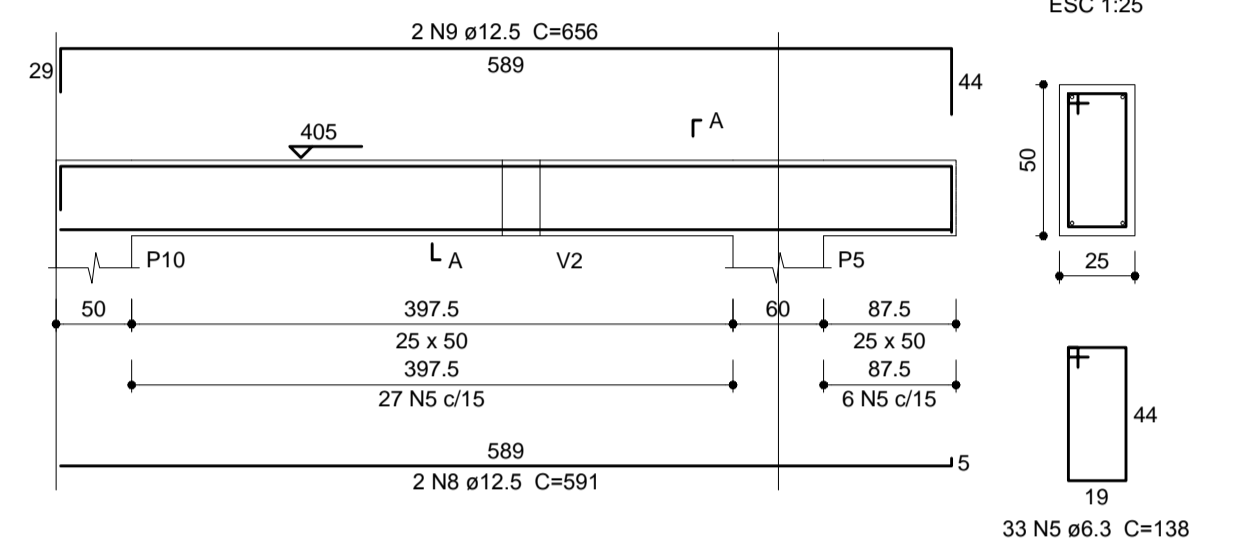
P3



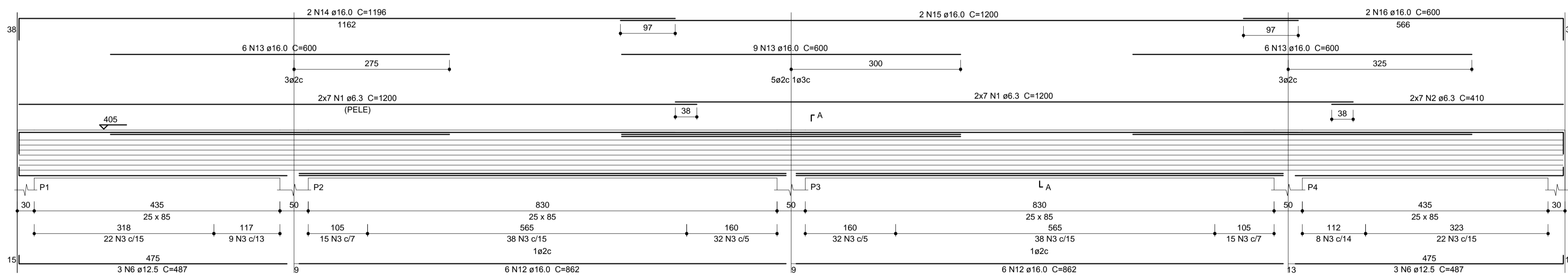
V2
ESC 1:50



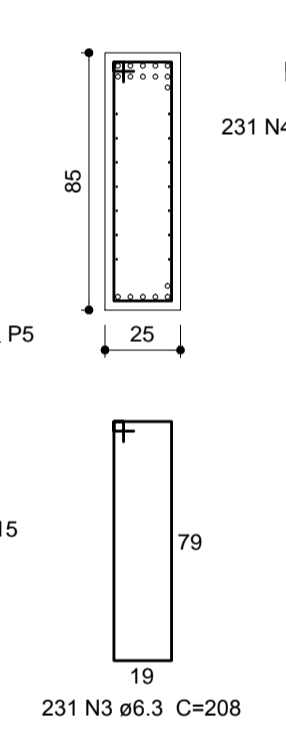
V3
ESC 1:50



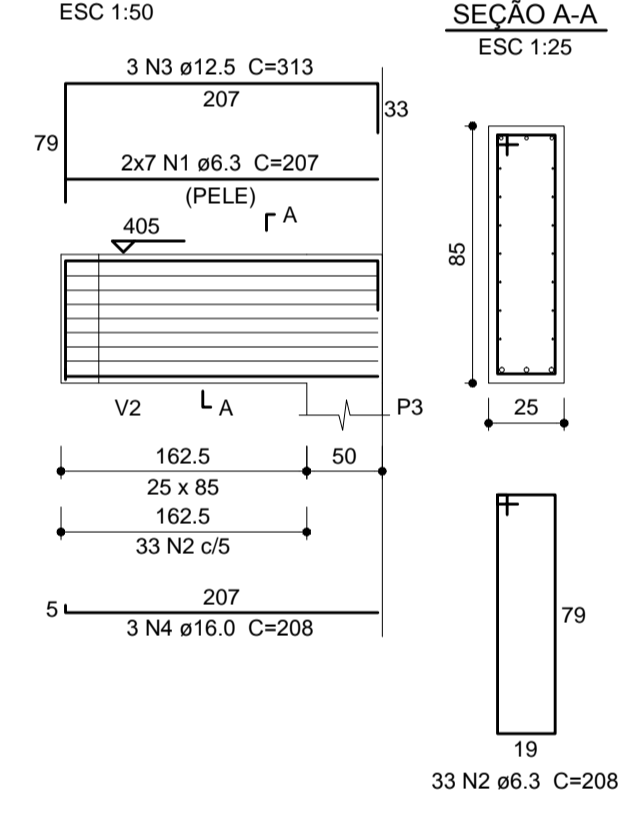
V1
ESC 1:50



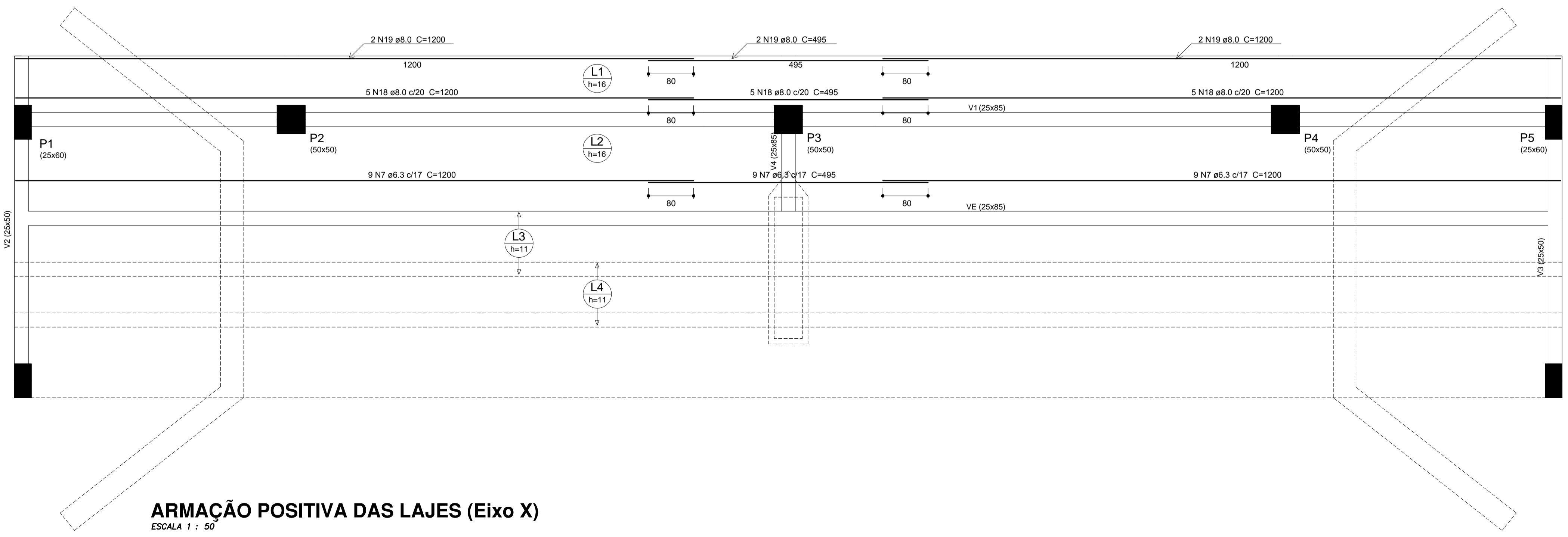
SEÇÃO A-A
ESC 1:25



Térreo
V4
ESC 1:50



SEÇÃO A-A
ESC 1:25



ARMAÇÃO POSITIVA DAS LAJES (Eixo X)
ESCALA 1 : 50

<p>engenharia@montecastelo.sc.gov.br</p>	EMPREENDIMENTO PÚBLICO	
	ENDEREÇO RUA GOVERNADOR JORGE LACERDA - DIVISA - MONTE CASTELO - MAJOR VIEIRA	
	PROPRIETÁRIO PREFEITURA MUNICIPAL DE MONTE CASTELO	
	PROJETO ESTRUTURAL	
AUTOR / RESPONSÁVEL TÉCNICO Engº DAIR KACZMAREK CREA/SC: 122404-S	ASSINATURA Prefeito Municipal - Jean Carlo Medeiros de Souza	ASSINATURA Responsável Técnico
DISCRIMINAÇÃO DETALHE DAS ARMADURAS DE PILARES E VIGAS		Nº DA PRANCHA 03
ESCALA INDICADA	DATA 15/10/2019	DESENHO DAIR KACZMAREK
		04